

2024 ANNUAL PROGRAM EVALUATION

Lee County Health Department

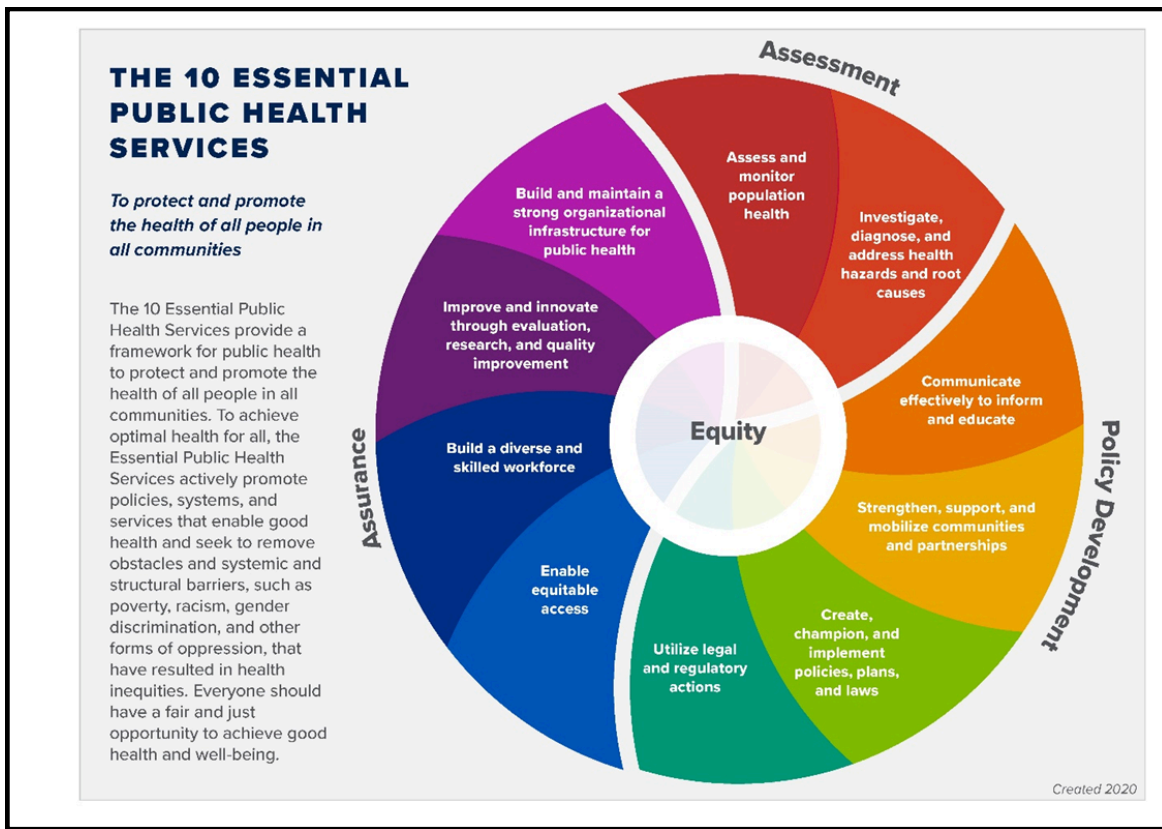
Promoting health across the lifespan



319-372-5225
www.leecountyhd.org

INTRODUCTION

Lee County Health Department (LCHD), is a department of Lee County, Iowa and governed by our Lee County Board of Health. LCHD is Lee County's local public health agency responsible for delivering the 10 Essential Public Health services. The 10 Essential Public Health Services provides LCHD with a framework to protect and promote the health of *all people in all communities* served. LCHD believes everyone should have fair and just opportunities to achieve their optimal health and well-being. The 10 Essential Public Health Services are:



As LCHD's Administrator, I am pleased to once again share our annual agency program evaluation for 2024. This evaluation is a result of the true dedication of our workforce, our governing body, and our community partners who are working each and every day to improve our population health in Lee County and within LCHD's service area.

All of LCHD's current programs, community project initiatives through coalition work, and community initiatives are a result of identified population health needs of the county that have resulted from on-going assessment, policy and system reviews, and strategic health improvement planning. Our quality workforce and successful collaborative work with community partners all working to achieve common goals has led us in the right direction for making positive health impacts in our communities. This report highlights some of the many successes achieved this past year.

Sincerely,
Michele Ross, Administrator
Lee County Health Department

LCHD TEAM

Lee County Board of Health

Dr. Philip Caropreso - Chair Judy Bartachek - Vice-Chair
Heather McCormick Paula Spiekermeier Dr. David Wenger-Keller

Administrator

Michele Ross, LBSW, LSW

Program Directors

Tammy Wilson Emily Biddenstadt, MPH Becky Fader, BSN Mike Shelangoski, BS
Finance/Operations Community Health Hospice/Homecare Environmental

Operations

Sara Helenthal Janie Johnson Jeana Vradenberg

Community Health & Oral Health

Erin Andries, RDH Angela Bauer, RDH Leslie Dettmers, RN Amy Hayes, BSN
Rachel Kern, RDA Jamee Hudson, BSN *Rachael Patterson-Rahn, RDH
Tessa Schroeder, BA Christine Van Berkum, BS

Hospice/Homecare

Jackie Booth, LPN Crystal Coffman Margaret Cook, LBSW, LSW
Patty Knustrom, RN Jessica Hall, RN Olive Miller
Michelle Terhune Patricia Tripp

Environmental Services

Michele Lozano Deedra Warner

HOPES/MIECHV Home Visiting Program

Amy Cook, BA Laura DeFord, BA Susan Jefferies, BA *Missy Park, BSW
Courtney Smith Raegan Swainey, LPN Patricia Tripp

**Program Manager*

Mission Statement

To touch the community with care.

By functioning as a community-based service system committed to the promotion of physical, social, emotional, and spiritual health; prevention of disease; and provision of care to the public.

And by collaborating and coordinating with other social, service and health organizations in assessment of community health needs, development of programs to meet those needs, implementing and evaluating programs.

LCHD PROGRAMS

Hospice & Homecare

Program Staff: Becky Fader, Patty Knustrom, Jessica Hall, Jackie Booth, Margaret Cook, Michelle Terhune, Olive Miller, Patricia Tripp



Hospice Program

Total Clients Served - 88
Skilled Nursing - 1269
Social Worker - 30
Massage Therapy - 105
Music Therapy - 74
Chaplain Visits - 27
Routine Care Days - 3713
Homecare Aide Visits - 461
Homemaker/Personal Care Hours - 45
Bereavement Home Visits - 30
Bereavement Phone Calls - 113
Bereavement Newsletters - 507
Angels to Families - 63

Homecare Program

Total Clients Served - 115
Skilled Nursing - 1170
Physical Therapy - 348
Occupational Therapy - 204
Speech Therapy - 24
HHAide Visits - 1619
Hospice - 461
Homemaker/Personal Care Hours - 1730



There were 180 of the 2024 Hospice Tree of Love ornament, Ascend, sold. One supporter sent us a picture of her special Tree of Love tree that had all the ornaments from the past years on it. She added "My LCHD-Hospice ornament tree remembering [our family]. LCHD offers a new ornament every year in which you can purchase in honor of or memory of. I started ordering ornaments in 2000 and have done so every year. These are beautiful ornaments every single year and it is a wonderful way to remember those you miss." In 2024, LCHD also started to sell ornaments from past years to those who may have missed them or wanted more of a certain one. There were 35 past ornaments sold.

LCHD Hospice & Homecare programs take pride in the positive impact they have on individuals and families while providing vital care in the comfort of their own home or space, and while navigating the end-of-life journey.

LCHD Hospice aims to provide pain & symptom management and support for families using a team approach that focuses on quality of life and comfort.

LCHD Homecare aims to provide patient-centered care of comprehensive services in the comfort of their home to improve health outcomes and reduce hospital readmissions.

As we continue to serve our community, our Hospice & Homecare programs remain committed to delivering compassionate, high-quality care that supports the patient's and families physical, emotional, and social well-being.

LCHD PROGRAMS

Environmental Services

Program Staff: Mike Shelangoski, Michele Lozano, Deedra Warner

The LCHD Environmental Health Services play a crucial role in safeguarding public health by conducting thorough inspections and providing essential sanitation services across sectors. Throughout the year, we ensure that food establishments, hotels, motels, tattoo parlors, and swimming pools meet health and safety standards, contributing to the well-being of our community.

Key services provided by our program include:

Health Inspections - we conduct regular inspections to assess sanitation practices and compliance with health codes at food establishments, hotels, motels, tattoo parlors, and swimming pools, helping to prevent health risks and ensure a safe environment for patrons.

Sanitation Services - our team also manages sanitation-related services, including septic permits and overseeing compliance with Iowa Code Chapter 69. Additionally, we support Private Well grant work to ensure safe and clean water access for residents.

By upholding rigorous standards and providing critical support, the LCHD Environmental Health Program fosters a healthier and safer community for all.

Food & Lodging Licenses	724
Temporary Food License	234
Inspection Totals by County	
• Lee	218
• Des Moines	232
• Henry	133
• Van Buren	42
Tanning Establishment Beds	19
Tattoo Parlor Inspections	9
Swimming Pool - Spa Facility Inspections	9
Radon Test Kits Purchased	9

New On-site Septic System Construction	78
Holding Tank Inspections	90
Variance/Holding Tanks	3
Wastewater Treatment Inspections	160
New Well Construction	1
Wells Plugging	0
Wells Rehabilitated	4
Water Well Tests	10
Demolition Permits	6
Cistern Plugging	0

LCHD PROGRAMS

CSA - Collaborative Service Area, partnership between LCHD, Trinity Muscatine Public Health & Washington County Public Health for certain grants

1st Five Healthy Mental Development

Program Staff: Tessa Schroeder, Christine Van Berkum

1st Five is administered by Iowa HHS with the goal of improving rates of developmental screening in primary healthcare and providing connections to early intervention services and community resources for referred children. Early intervention is crucial because the first five years of life are the period when over 90% of brain growth occurs. Providing intervention while the brain is still developing is most effective for improving outcomes for children with delays.

LCHD is the 1st Five contractor for CSA 13/14, which includes Des Moines, Henry, Lee, Louisa, Muscatine, Washington, and Cedar Counties in Southeast Iowa. It is the role of the 1st Five Site Coordinator with LCHD to support healthcare practices in the 7-county CSA to implement developmental surveillance and screening into their well-child visits. The Site Coordinator provides training and technical assistance on developmental screening tools to partnering healthcare practices and can connect to peer consultation support when needed.

When 1st Five partnering primary care providers in CSA 13/14 screen for delays in development, social/emotional development, and family stress, and a concern is identified for a child birth to five, the child is referred to 1st Five. Then, a Developmental Support Specialist reaches out to the parents or caregiver over the phone to link them to appropriate intervention services. They remain in contact until services are established, and then they follow-up with the provider to share updates on the connections made for the child.

1st Five supports both early identification of delays and early intervention for referred children and is an important resource for healthcare providers and parents/caregivers. Research has shown that the earlier a child with delays is connected to intervention and support, the better the outcome is for the child. 1st Five is the connecting piece, working hard to improve outcomes for Iowa children!

FY24 Data for 1st Five CSA 13/14

1st Five Engaged Healthcare Practices
in Lee County - 5

Total 1st Five Engaged Healthcare Practices
in CSA 13/14 - 30

Referrals Received from Lee County
Healthcare Providers - 24

Total Referrals Received from CSA 13/14
Healthcare Providers - 140

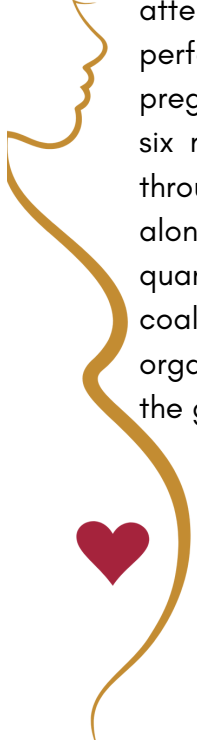


LCHD PROGRAMS

Healthy Pregnancy Program

Program Staff: Jamee Hudson, Leslie Dettmers

The Maternal Health Program provides education, resources, support, and one-on-one nursing attention to pregnant and postpartum women. Program staff work on improving state and national performance measures by educating on: reducing the number of women who use nicotine during pregnancy, factors to prevent maternal mortality, increasing the number of babies breastfed their first six months, safe sleep, and oral health care during pregnancy. These measures are worked on through the CSA13 partnership with Trinity Muscatine Public Health and Washington County Health, along with the CSA13 Healthy Pregnancy Coalition. The coalition meets the first Thursday of each quarter (January, April, July, October) with in-person and online options for attending. In 2024, the coalition started developing a pregnancy resource guide to promote to area providers and organizations that work with pregnant women, and for those expecting. The coalition hopes to have the guide ready for distribution mid-year.



October 2023-September 2024 <i>this reflects the CSA grant year</i>	
Total # of Maternal Health Clients in Service	152
Maternal Health Education/Visits	74
Emergent Medicaid Insurance	24
Care Coordination	64
Maternal Health Clients Referred to Quitline Iowa	12%
Maternal Health Clients with Medical Home for Prenatal Care	100%

Child Adolescent Health

Program Staff: Jamee Hudson, Leslie Dettmers, Janie Johnson, Jeana Vradenburg

The CAH program, promotes the health of children, youth, adolescents, and their families by providing gap-filling health care services, linking families to community-based services, educating on eligibility for Medicaid or Hawki insurance, as well as other private & public collaborative efforts. Staff provide gap-filling services such as blood lead testing, vision screenings, oral health screenings, and developmental screenings with referrals to Early Access as needed. The program focuses on health equity of services, family engagement, and education on well-visit exams, immunizations, medical homes, and those newly eligible for Iowa Medicaid. Like the Healthy Pregnancy Program, the CAH Program partners with Trinity Muscatine Public Health and Washington County Public Health to cover the CSA13 region.

October 2023-September 2024 <i>this reflects the CSA grant year</i>	
Total # of Child Health Clients in Service: 7,242	Care Coordination: 230
Children Fully Immunized by Age 2 (<i>Lee County only</i>): 62.9%	Lead Tests: 471
Adolescents Fully Immunized by Age 15 (<i>Lee County only</i>): 94.9%	Developmental Screenings: 204
Emergent Medicaid Insurance: 35	Vision Screenings: 123

LCHD PROGRAMS

Oral Health Programs/I-Smile

Program Staff: Rachael Patterson-Rahn, Erin Andries, Angela Bauer, Rachel Kern

I-Smile

LCHD's oral health team, as well as CSA13 partners, cover the six-county service area for children and pregnant women through I-Smile. All 99 counties receive I-Smile services through 15 contract agencies. LCHD has proudly served the Southeast corner of the state for over two decades.

Oral health services provided are mostly basic, preventive services accompanied by appropriate referrals and care coordination to help families access needed dental care. Public health settings where services are offered primarily include early childhood programs such as Head Start and WIC as well as private child care centers and preschools. I-Smile @ School, a school-based dental sealant program, is also a component of I-Smile with services being offered in qualifying ($\geq 40\%$ FRL) elementary and middle schools. School sealant programs are strongly supported, and often funded, by the CDC as is the case in Iowa.

Services include oral screening, risk assessment, and education as well as evidence-based fluoride varnish and dental sealants, the latter only offered at applicable schools. Silver diamine fluoride (SDF), also supported by research, is an additional service offered at Head Start and WIC and other select settings. SDF arrests tooth decay which stops it from getting worse to help avoid pain or more costly dental treatments that are more likely if the cavity continues to grow. SDF can take the place of a traditional filling or at least buy time until comprehensive dental care can be received.

LCHD's Oral Health Program Manager discovered more than a 50% decrease in the decay rate among back-to-back freshman classes at a local high school a number of years ago. After scratching her head in wonderment and being briefly stunned, she eventually confirmed they were the first group of children offered I-Smile @ School services (highly effective dental sealants!) in our program history.

Dental public health programs continue making a difference and their need has only grown as access to care for underserved populations is sadly worsening. In 2021, 1035 dentists were billing Iowa Medicaid, with only 809 in 2023. This makes the work of coordinating care when the client's needs go beyond what we are able to provide, ever so challenging and showing the importance for advocacy.



CSA13 October 2023-September 2024 *this reflects the grant year*

Dental Screenings: 6,326

Silver Diamine Fluoride: 35

High Risk: 1,467

Low Risk: 6

Fluoride Varnish: 6,100

Sealants: 3,315

Moderate Risk: 4,865

Dental Care Coordination: 1,338

LCHD PROGRAMS

I-Smile™ Silver

Program Staff: Rachael Patterson-Rahn, Erin Andries, Angela Bauer, Rachel Kern

LCHD's oral health team covers three counties for at-risk adults and older lowans through I-Smile Silver: Des Moines, Lee, and Van Buren. Only 10 Iowa counties receive I-Smile Silver services at this time through three contract agencies. LCHD has proudly been offering needed services for underserved adults for over a decade.

Due to the success of I-Smile, I-Smile Silver was created as a look-alike program to address the needs of the aging population and eventually broadened to include other at-risk adults. Contractors quickly learned the unique challenges with reaching and serving adults make it far from a true look alike program. Nonetheless, we continue to experiment with how to best make an impact.

Similar to I-Smile, oral health services including care coordination are provided to help individuals access needed dental care. LCHD also has portable dental x-ray capability which may facilitate teledentistry helping expedite treatment with fewer appointments. The public health settings differ from I-Smile with many possibilities including medical clinics, recovery residences, section 8 housing, etc.

In addition to ongoing medical dental integration projects including collocating an LCHD dental hygienist into local medical clinic settings as well as partnering with area emergency departments to provide care coordination for individuals presenting with dental complaints, LCHD is also in the process of training agency hospice and homecare registered nurses to provide basic, preventive oral health services as part of the overall care received while enrolled in hospice or homecare. The significant role oral health plays in overall health, especially for those with chronic health conditions, made this an easy decision. Another new medical dental integration endeavor is our evolving level of participation in the Southeast Iowa Complex Care Network, in partnership with the Van Buren County Hospital and other council members.

Iowa veteran oral health is a relatively new area of funder interest. Therefore, an increased emphasis on prioritizing the population will be part of the upcoming grant year. In addition to connecting with Veterans Service Officers in each county to develop local systems, LCHD's Oral Health Program Manager is participating in an advisory council led by American Institute of Dental Public Health representatives in partnership with Delta Dental of Iowa Foundation and the Oral Health Iowa coalition as the state pursues positive change for veterans.



LCHD PROGRAMS

Southeast Iowa Public Health Academic Training Program

Program Staff: Christine Van Berkum

LCHD is currently in the third year of the Health Resources & Services Administration (HRSA) grant. This grant was used to establish the Rural Public Health Workforce Training Network. LCHD continues to partner with Southeastern Community College (SCC) and Southeast Iowa Regional Medical Center (SIRMC) as well as Memorial Hospital and Clinics to implement the three core components of the grant's focus: Community Health Worker certificate course, Mobile Connection Centers, and Lunch & Learns.

Community Health Worker certificate course: Build network of well-trained professionals with knowledge of community resources, CHW skills, and public health concepts through offering a non-credited 8-week paid CHW course at SCC.

There have been a total of 8 courses offered thus far and 4 of those were in 2024. Of those four, 21 students completed an 80-hour course that consisted of 64 hours of course work and 16 hours of experiential learning with local partners who offer services related to community health. These partners included Memorial Hospital and Clinics, Maternal Health, Milestones, Goodwill, Ft. Madison Food Pantry, Community Action, Lee County Interagency, and more.

Semester	Completed
January 2024	6
March 2024	3
June 2024	7
October 2024	5

2024 CHW Student Feedback:

"I like how it was a small class which made it easier to connect with each other. I really like the slides put together for each chapter....I liked the interactivensess of the class with teachers and classmates."

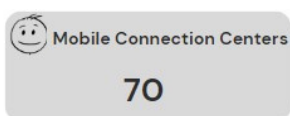
"Loved the clinical experiences - getting out in the community, meeting people and finding out so much information was so great."

"I feel like the whole course provided me with support, but the clinical hours are useful as I am able to actually talk to somebody and learn in-person."

Mobile Connection Centers (MCC): Serve underserved populations through Mobile Connection Centers to expand current public health functions and provide experiential learning to CHW students.

In 2024, Mobile Connection Centers were offered primarily within Ft. Madison Food Pantry due to the high traffic of Lee County residents. MCC was also available by phone to those who don't have access to transportation. MCC's were staffed by LCHD employees within the HRSA grant however they were also used as a way for CHW students to complete their experiential learning hours.

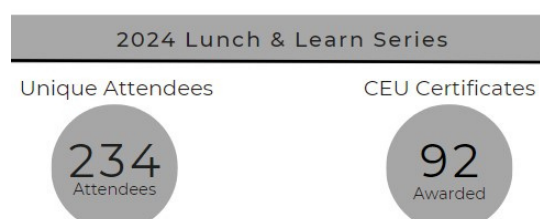
The cumulative data below shows the impact that MCC's have had in Southeast Iowa from 2022 through 2024.



Lunch & Learn Series: Brief educational opportunities to improve operational capacity of the health care system and meet broader human and social service needs of their patients.

There were 4 Lunch & Learns offered in 2024.

- Healing Iowa ACES
- Substance Misuse
- Local Behavioral Health through a Mental Health and Disability Lense
- Healing Generational Trauma



LCHD PROGRAMS

Resilient Communities Demonstration Project

Program Staff: Emily Biddenstadt, contracted staff



Empowering Families' mission is to provide happy, healthy, safe childhoods in Lee County. We want to strengthen relationships and improve supports/services for our children and families.

Empowering Families took the strategic planning from Fall of 2021 to begin planning for sustaining Empowering Families and the Lee County Children's Collaborative. The original three strategic directions were United Lee County, Transforming Thoughts & Practices, and Empowering Families. At the October 2024 sustainability session four similar, and new, directions were developed: Unite Lee County, Empowering Families, Workplace Policy, and Childcare Needs. Some action ideas were to gather and consolidate plans, increase awareness/education campaigns, education on how to start a daycare, career days at schools, assist with workforce assessments, continue to expand Parent Café opportunities, and develop plans with schools about community life skills.

Resilient Catalyst - Completed our work with National Association on City and County Health Officials (NACCHO) and George Washington University with a Lee County Policy Brief. The brief provides recommendations for achieving the outcomes from the completed logic model. The recommendations share opportunities for economic development change at the policy, program, and practice levels. This brief is available for any business and organization to review, and will be used during the sustainability planning.

Parent Café - Parent Café is a research-based program that provides a safe space for parents and caregivers to learn about protective factors that can strengthen families, explore their strengths, build parent leadership, engage in peer-to-peer learning, and to discuss what it means to keep children safe and families strong. On February 22, the first Parent Café was held during the FMCSO Resource Fair. Cafes continued throughout the rest of the year establishing a core group of participants. Outreach took place on social media and at outreach events.

Child Abuse Prevention Month - Every April is Child Abuse Prevention Month, and the mission of Prevent Child Abuse Iowa is "to build meaningful connections, share resources, and expand knowledge to create a stronger prevention network in Iowa." This year we partnered with Fort Madison Area Arts Association to hold a coloring contest where children colored a pinwheel - the symbol of Child Abuse Prevention Month. Other activities that took place were:

Diaper Dash - 70 participants with over \$1200 in donations received

Child Champions - these recognize the positive side of child abuse prevention and encourages others to do similar work and offer kindness to others. Nominees were recognized on being a positive influence in the lives of the children they work with.



Healing Library - in 2021, Healing Library kits were donated to all five public libraries in Lee County. The kits included Death of a Loved One, Death of a Pet, and Divorce and Separation. The librarians report that there has been a lot of interest from families looking at them in-house. In 2024, the kits were checked out six times at the participating libraries.

LCHD PROGRAMS

HOPES/MIECHV Home Visiting Program

Program Staff: Missy Park, Becky Fader, Amy Cook, Raegan Swainey, Susan Jeffries, Laura DeFord, Margaret Cook, Patricia Tripp, Courtney Smith

The HOPES program has answered any questions I have had and then some. My worker has been very considerate of the "new mom" chaotic household & any unanswered questions are answered by the next visit. It's been very nice having her come over & spread her bright personality all around.

I really enjoy the HOPES program as a new mother because it provides me with reassurance and lots of good information about taking care of my baby. My worker is exceptional in every aspect. She provides support, advice, and comfort. I think the HOPES program is a great resource for new mothers, struggling mothers, or anyone!

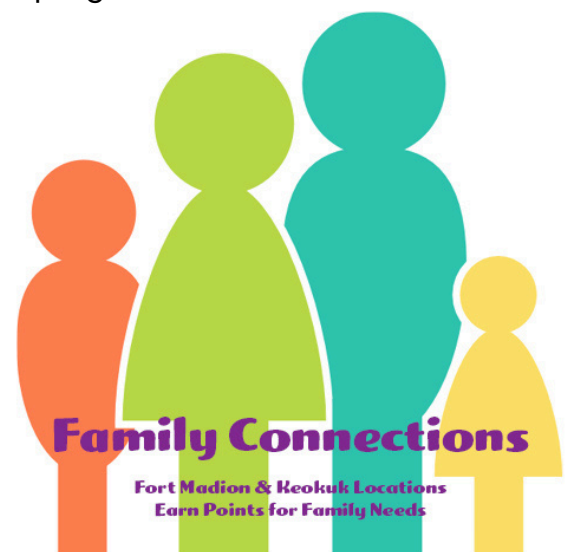
I will never forget all the guidance and advice you gave me being such a young mom. I still talk about you to my daughter and she still remembers you! I will always appreciate all you did for us!

# Children Participating	127
# Families Participating	132
# of Home Visits	2494
# Parent Meetings Offered	50
% of children with a medial home	100%
% Children with Updated Immunizations	100%

When working with families referrals were made to several community resources like daycare assistance, food pantries, food stamp application, family counseling, energy assistance, Toys for Tots, DVIP services, SEIBUS for Iowa City appointments, Legal Aid, Salvation Army, and Early Head Start.

Staff attended numerous community outreach events including Lee County Fair Kids Day, and the Early Childhood Summit. Along with promoting the program at community events, staff have been attending WIC clinics on a regular basis to recruit families to the program.

Family Connections of Lee County continues to meet twice monthly in Fort Madison and Keokuk. The group is also working with Parent Cafes as an added component (more information under the Resilient Communities section). The group is for expecting parents and parents/guardians of children under the age of 5. Participants can earn points by attending groups to "purchase" necessary items for their family such as diapers, wipes, car seats, etc. The groups focus on appropriate expectations of children, developing empathy, positive discipline, stress management, appropriate family roles, empowerment, connections to resources, along with fun family centered activities.



LCHD PROGRAMS

Child Care Nurse Consultant

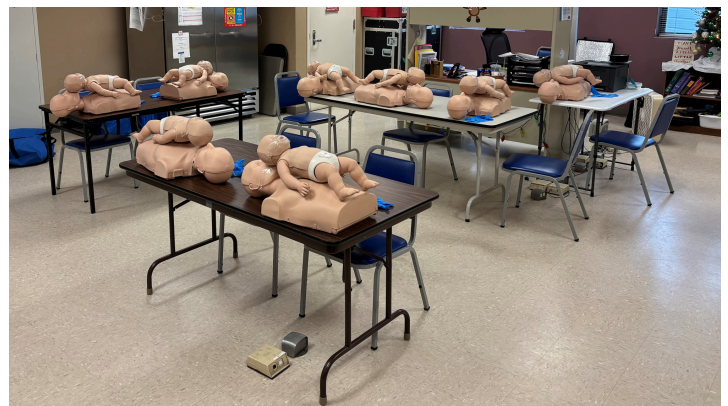
Program Staff: Amy Hayes

The CCNC focuses on Health and Safety in the childcare centers and homes. To ensure health and safety the CCNC provides the following trainings: Medication Administration; Period of Purple Crying, CPR/First Aid (more below), Caring for Children with Allergies, Anaphylaxis and Seizures, Caring for Children with Asthma and Back to Sleep. The trainings are offered in-person and/or virtual. The CCNC offers technical assistance and does onsite visits to assist centers with things such as applying for IQ4K, reviewing children's files, assessing the arrangements/placement of furniture; making sure play equipment/toys are safe and age appropriate; among other needs. This program receives supportive funds from Children First and Iowa HHS.

Number Childcare Providers participating with CCNC	33 (out of 35)
Number of Provider Visits	49
Number of Technical Assistance Calls	97
Number of Special Health Need Care Plans	39
Number of HCCI DHS Approved Trainings	11
Number of Training Participants	96
# of Handwashing Participants	125

From December 2023 through September 2024, LCHD received a CPR Training for Childcare Providers grant from the state. This grant allowed Amy Hayes, an American Heart Association certified trainer, to provide CPR/1st Aid training for childcare employees in the CCR&R Region 5. With this large region to cover, Amy traveled throughout Southeast Iowa to provide the training. A total of 185 childcare employees were trained by Amy using grant funds.

Starting in October 2024, CPR/1st Aid training continued for childcare provider employees, however with no grant funds there is now a charge. The fee includes the online course training, their test out with Amy, and their final certificate from the University of Iowa. For non-childcare organizations, the training is available as well for a fee.



LCHD PROGRAMS

Clinics - Immunization, TB, Flu

Program Staff: Amy Hayes, Raegan Swainey, Becky Fader, Jackie Booth, Jamee Hudson

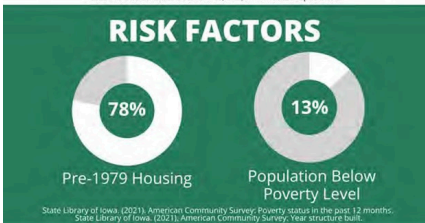
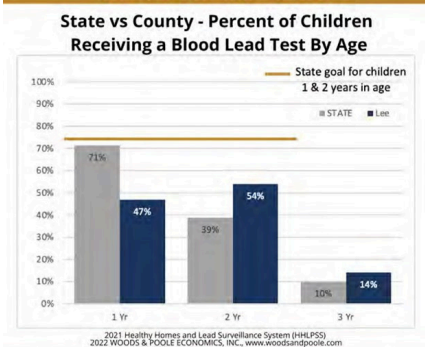
LCHD offers two immunization clinics a month - one in Keokuk and one in Fort Madison. As participants of the Vaccines for Children (VFC) program vaccines are available for the uninsured, underinsured, for those on Iowa Medicaid, or whose insurance doesn't cover vaccines. LCHD also held two Back-to-School Immunization Clinics in August 2024. In 2024, LCHD saw 121 children at immunization clinics with a total of 236 vaccines given.

TB Clinics are held every Monday (exception of holidays) at LCHD from 3:00pm-4:00pm with a cost of \$20. In 2024, LCHD conducted 58 TB tests.

In 2024, LCHD held five off-site flu clinics plus having them available during TB clinics. LCHD gave 159 flu vaccines.



2021 LEE COUNTY LEAD REPORT CARD



Childhood Lead Poisoning Prevention Program (CLPPP)

Program Staff: Amy Hayes, Leslie Dettmers, Deedra Warner

Early detection of lead in the blood system is a preventive measure for developmental delays in children. Risk factors for children include living in or being in a daycare home setting that was built before 1978, low-income family, or from an underdeveloped country (refugee, adoption, etc.). The Iowa Department of Health and Human Services recommends that all children in Iowa get a blood lead test at 1 and 2 years of age and tested annually up to age 6 based on their risk factors. Lead testing is available at immunization and WIC clinics by using a Lead CARES II machine to give immediate results. While partnering with other LCHD programs like Child Adolescent Health, CCNC, and HOPES lead testing is promoted through coordinated outreach.

# of Lead Tests	140
Lead - Initial Inspections (in home)	4
Lead Follow-up Case Management	4
Dust Sampling tests for lead paint	0

LCHD PROGRAMS

LCHD Kids' Health & Safety Fair

On July 26, 2024 LCHD held the 1st Annual Kids' Health & Safety Fair. Over 100 people attended the first-time event. The afternoon event allowed for some back-to-school prep with dental screenings, required immunizations and lead testing, and vision screenings available. There were 20 community partner agencies that participated by sharing health and safety education. Door prizes, activities, and snacks were also available for kids. LCHD is looking forward to the 2025 event!



LCHD PROGRAMS

Emergency Preparedness, Response, and Recovery

LCHD continued to be part of a 15-county regional health care coalition and participated in monthly regional planning and activities with other county public health agencies, hospitals, Emergency Medical Services (EMS) and Emergency Management Agencies (EMA). Activities LCHD participated in include regional coalition meetings, subcommittee planning work, exercises, monthly radio tests, and redundant communication drills.

In the last quarter of 2024, LCHD organized with neighboring counties to plan for a local level Closed Points of Dispensing (POD) full-scale Drill. This required LCHD updating Closed POD Agreements and Memorandums of Understanding with our local Long Term Care Facilities, Home Health and Hospice agencies serving Lee County, our local hospital, and Lee County EMS. Strategic National Stockpile assets were ordered by LCHD on behalf of the county organizations playing in the drill to test public health emergency response plans and distribution plans at local closed POD sites. This was a successful drill with zero wastage of assets and review/updates of our local plans. It tested incident command structures at LCHD and communication plans. An after-action report will be developed in early 2025 to summarize lessons learned and an improvement plan will be created for all playing organizations. A quarterly Lee County Health Care Coalition meeting will convene involved partners for a full review and planning/training needs for 2025.

In the Spring 2024, LCHD put their call tree list and emergency preparedness training into action during the Derecho event. LCHD staff that were in the office took shelter on the lower level of their building, while management tried to call/test staff that were in the field to assure they were in a safe location. Hospice/Homecare and home visiting staff also checked on clients to ensure their safety. LCHD also utilized their Facebook page to keep the public updated on any outages that the agency was experiencing. All staff and clients were accounted for and safe during and after the event.

The drill and Derecho event, gave LCHD the opportunity to review their maintained up-to-date emergency plans, call tree lists, and provided annual emergency preparedness training to the agency's workforce including all staff, volunteers, and contracted entities.



LCHD PROGRAMS

LCHD Volunteers

LCHD volunteers are an essential piece of the agency. From July 2023 through June 2024, LCHD volunteers logged 535.75 hours of their time to agency programs. The 2024 national value for volunteer time is \$33.49/hour. That means the volunteer's hard work and dedication to LCHD saved the agency \$17,942.27.

LCHD volunteers assist with hospice by visiting with clients and helping families. They volunteer at outreach events like the ABATE District 18 Annual Mystery Ride for Hospice and Senior Day at the Fair. They work in the office assembling admission packets, organizing the bereavement newsletter mailing, and making the annual Tree of Love a success.

New for 2024 was immunization record project. LCHD had promoted through multiple outlets that anyone with a date-of-birth before 2000, their record would be disposed of per Iowa code. Our volunteer looked for record requests and organized records that were to be kept. Volunteers also prepare consent packets and goody bags for the oral health program. There is even a team that works on imaging charts for hospice, homecare, and community health programs.

Anyone can be a LCHD volunteer! If interested in becoming a volunteer just call the office at (319)372-5225.

2024 Volunteer
Percentages by Program

