

# ANNUAL PROGRAM EVALUATION

20  
23

**Lee County Health Department**

*Promoting health across the lifespan*

[www.leecountyhd.org](http://www.leecountyhd.org)



# INTRODUCTION

Lee County Health Department (LCHD), is a department of Lee County, Iowa and governed by our Lee County Board of Health. LCHD is Lee County's local public health agency responsible for delivering the 10 Essential Public Health services. They provide the LCHD's framework to protect and promote the health of *all people in all communities* served.

The 10 Essential Public Health Services support the promotion of policies, systems, and overall community conditions that enable *optimal health for all* and seek to remove systemic and structural barriers that can result in health inequities or other community health risk factors that limit individual and family access to needed resources or care. LCHD believes everyone should have fair and just opportunities to achieve their optimal health and well-being. The 10 Essential Public Health Services are:

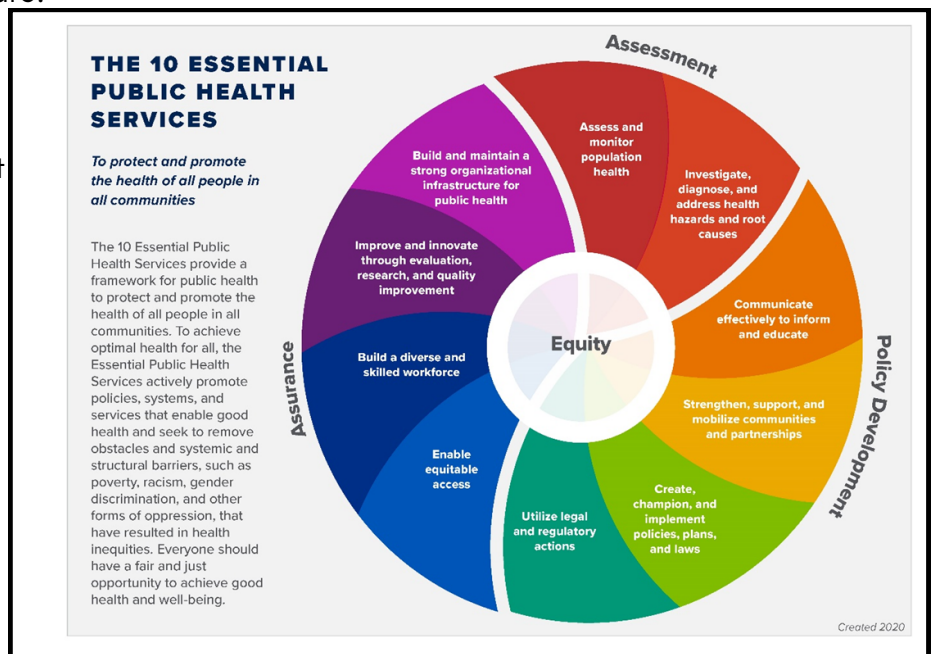
All of LCHD's current programs help those who may benefit most from high-quality services or programs, throughout their life course. LCHD strives to employ a competent and diverse workforce who have adequate resources to do their work in a safe and supportive work environment.

As LCHD's public health administrator, I am pleased to

share our annual agency program evaluation for 2023. This evaluation is a result of the true dedication of our workforce, our governing body, and various community partners. It represents our shared vision for an integrated, culturally appropriate public health system that works towards advancing health equity, building upon our quality workforce strengths and capacities, and the program services we provide based on assessed community health needs while maintaining fiscal accountability to our tax payers and funders.

We look forward to our continued work in the communities we service for years to come.

Sincerely,  
Michele Ross, Administrator  
Lee County Health Department



# LCHD TEAM

## Lee County Board of Health

Judy Bartachek – Chair      Dr. Philip Caropreso – Vice-Chair  
Heather McCormick      Paula Spiekermeier      Dr. David Wenger-Keller

## Administrator

Michele Ross, LBSW, LSW

## Program Directors

Tammy Wilson      Emily Biddenstadt, BA      Becky Fader, BSN      Mike Shelangoski, BS  
Finance/Operations      Community Health      Hospice/Homecare      Environmental

## Operations

Sara Helenthal      Janie Johnson      Jeana Vradenberg

## Community Health & Oral Health

Erin Andries, RDH      Angela Bauer, RDH      Leslie Dettmers, RN      Jeri Giebelhausen  
Amy Hayes, BSN      Rachel Heidbreder, RDA      Jamee Hudson, BSN  
Breanna Kramer, MPH      \*Rachael Patterson-Rahn, RDH      Tessa Schroeder, BA  
Christine Van Berkum, BS

## Hospice/Homecare

Jackie Booth, LPN      Crystal Coffman      Margaret Cook, LBSW, LSW  
Patty Knustrom, RN      Jessica Hall, RN      Olive Miller      Julia Saunders  
Michelle Terhune      Patricia Tripp      Bobbi Zinnert, RN

## Environmental Services

Michele Lozano      Deedra Warner

## HOPES/MIECHV Home Visiting Program

Amy Cook, BA      Laura DeFord, BA      Susan Jefferies, BA      Laurie Mullins  
\*Missy Park, BSW      Raegan Swainey, LPN

## Mission Statement

To touch the community with care.

*\*Program Manager*

By functioning as a community-based service system committed to the promotion of physical, social, emotional, and spiritual health; prevention of disease; and provision of care to the public.

And by collaborating and coordinating with other social, service and health organizations in assessment of community health needs, development of programs to meet those needs, implementing and evaluating programs.

# LCHD PROGRAMS

## Hospice & Homecare

Program Staff: Becky Fader, Patty Knustrom, Jessica Hall, Bobbi Zinnert, Jackie Booth, Margaret Cook, Jeri Giebelhausen, Michelle Terhune, Olive Miller, Patricia Tripp, Julia Saunders

Over 30 years ago, LCHD Hospice became the first hospice in Lee County. The program offers end-of-life care to persons and their loved ones who have been diagnosed with a terminal illness by enhancing the person's quality of life through physical, emotional, and spiritual support. Services can include skilled nursing visits, chaplain services, social services, volunteer services, massage therapy, music therapy, other therapy services, home health services, and bereavement and counseling. The agency's service area includes Lee, Des Moines, Henry, and Van Buren Counties in Iowa and Hancock and Henderson Counties in Illinois as a Medicare/Medicaid certified comprehensive hospice agency.



LCHD Homecare services promote healthy and safe home environments so homebound individuals can remain in their home while coping with an illness or injury. Clients can receive necessary care such as skilled nursing visits, personal care, homemaking services, companion services, speech therapy, physical therapy, occupational therapy, and connections to local resources. LCHD is a certified Medicare/Medicaid agency that can accept Medicare, Medicaid, and other third party payor sources such as Blue Cross Blue Shield, Veterans Health Insurance, United Health Care, etc.

### Hospice Program

Total Clients Served	93
Skilled Nursing	1053
Physical Therapy	1
Occupational Therapy	0
Speech Therapy	0
Social Worker	212
Massage Therapy	49
Music Therapy	76
Routine Care Days	2873
Inpatient-Acute Days/Respite	0
Chaplain Visits	37
Bereavement Home Visits	17
Bereavement Phone Calls	38
Bereavement Newsletters	308
Sent Sympathy Cards	71
Angels to Families	68

### Homecare Program

Total Clients Served	94
Skilled Nursing	1041
Health Promotion	0
Physical Therapy	320
Occupational Therapy	189
Speech Therapy	5
HHAide Visits	
Reimbursable	1945
Hospice	416
Private Pay	581
Total Waiver Visits	364

# LCHD PROGRAMS

## Environmental Services

Program Staff: Mike Shelangoski, Michele Lozano, Deedra Warner

Environmental services cover a variety of areas from food inspections to swimming pool inspections to radon awareness to well plugging - all things environmental.

The Environmental Department covers four counties for food inspections: Lee, Des Moines, Henry, and Van Buren. This not only includes restaurants, but all special events where temporary food permits are required like farmer's markets and festivals. The first two weekends of September 2023 the inspectors completed nearly 80 inspections at the Midwest Old Thresher Reunion and the Tri-State Rodeo.

The Grants to Counties Water Well Program provides funds that allows LCHD to provide free water well testing. Tests will show total coliform bacteria, E. Coli, and nitrates. LCHD inspectors will schedule a time to gather the well water samples to be sent to the Iowa Hygienic Laboratory.

Food & Lodging Licenses	661
Temporary Food License	195
Inspection Totals by County	
• Lee	146
• Des Moines	205
• Henry	159
• Van Buren	48
Tanning Establishment Beds	20
Tattoo Parlor Inspection	8
Swimming Pool - Spa Facility Inspections	9
Radon Test Kits Purchased	13

New On-site Septic System Construction	85
Holding Tank Inspections	88
Variance/Holding Tanks	0
Wastewater Treatment Inspections	169
New Well Construction	3
Wells Plugging	3
Wells Rehabilitated	0
Water Well Tests	18
Demolition Permits	3
Cistern Plugging	8

# LCHD PROGRAMS

## 1st Five Healthy Mental Development

Program Staff: Tessa Schroeder, Christine Van Berkum



The 1st Five Healthy Mental Development Initiative works to build partnerships with primary care practices to promote the standardized use of developmental surveillance and screening tools within the well-child exam for children birth to five. By providing training and technical assistance to partnering practices on developmental screening tools, 1st Five supports best practices in well-child care, significantly increasing the early identification rates for developmental delays and social-emotional concerns.

When concerns are identified for a child, 1st Five at LCHD is also the primary care provider's referral resource for early intervention and support. When a referral is placed to 1st Five, a Developmental Support Specialist (DSS) will reach out to the family over the phone to connect them to early intervention therapies and other community resources that meet the needs of the child and the family. Other resources can include: home visitation, dental care coordination, employment assistance, financial assistance, transportation, counseling, food pantries, and much more. It is important to provide intervention and support early, when brain growth is at its peak, to support school readiness and better outcomes for the child.

During Q1 and Q2 of FY23, LCHD was the 1st Five grantee for five counties in Southeast Iowa: Davis, Des Moines, Jefferson, Lee, and Van Buren. Data from Q1 and Q2 reflects that service area.

On January 1, 2023, LCHD was awarded the contract for CSA13 that includes: Des Moines, Henry, Lee, Louisa, Muscatine, and Washington Counties. LCHD was then asked by Iowa HHS to extend that work into Cedar County in CSA14, as well. Data from Q3 and Q4 reflects those changes.

<b>FY23</b>	<b>Q1-Q2</b>	<b>Q3-Q4</b>
Level 3 Engaged Practices	7	19
Practice Meetings/Trainings	5	5
Presentations to Community Partners	10	6
Community Outreach Events	5	6
Referrals to 1st Five	31	81

# LCHD PROGRAMS

The Collaborative Service Area (CSA) 13 was a new partnership for Maternal Child Adolescent Health, I-Smile, and 1st Five Healthy Mental Development grants from the Iowa Department of Health and Human Services (Iowa HSS). LCHD is the contract holder for these grants with the collaborative partnership with Trinity Muscatine Public Health and Washington County Public Health to conduct services and to complete grant activities.

## Maternal Health/Healthy Pregnancy Program

Program Staff: Jamee Hudson, Leslie Dettmers

The Maternal Health Program is now known as the Health Pregnancy Program. The services for expectant mothers and families remain the same, however the name encompasses more of the program goals to reduce the number of pregnant women who smoke during pregnancy, educate on the dangers of preeclampsia, increase the number of babies who are breastfed the first six months, educate on the importance of back for sleep, and oral health care during pregnancy. These goals are worked on through the CSA13 partnership with Trinity Muscatine Public Health and Washington County Public Health, along with the formation of the CSA13 Healthy Pregnancy Coalition.

October 2022 - September 2023 *this reflects the grant year*

Mothers receiving Prenatal Care in 1st Trimester - 100%

Maternal Health Education/Visits - 30

Care Coordination - 43

Total # of Maternal Health Clients in Service - 115

## Child Adolescent Health

Program Staff: Jamee Hudson, Leslie Dettmers, Jeri Giebelhausen, Janie Johnson, Jeana Vradenburg

The CAH program, like the Healthy Pregnancy Program, has transitioned to the CSA13 region. The program focuses on health equity of services, family engagement, establishing a medical home, providing informing services to those newly eligible for Medicaid, immunization promotion, blood lead level testing, referrals to Early ACCESS, and promotion of Hawki.

October 2022 - September 2023 *this reflects the grant year*

Children fully immunized by age 2: 68.2%

Adolescents fully immunized by age 15: 73.7%

Lead Tests- 327

Developmental Screenings- 249

Vision Screenings- 136

Care Coordination- 72

Total # of Child Health Clients in Service- 5,460



# LCHD PROGRAMS

## Oral Health Programs/I-Smile™

Program Staff: Rachael Patterson-Rahn, Erin Andries, Angela Bauer, Rachel Heidbreder

### I-Smile™

LCHD's oral health team, as well as CSA13 partners, cover the six CSA13 counties for children and pregnant women through I-Smile™. All 99 Iowa counties receive I-Smile™ services through 15 contract agencies. LCHD has proudly served the Southeast corner of the state for nearly two decades.

Oral health services provided are mostly basic, preventive services accompanied by appropriate referrals and care coordination to help children and families access needed dental care. Public health settings where services are offered primarily include childcare centers, preschools, Head Start and WIC.

Services include oral screening, risk assessment, fluoride varnish, and education as well as dental sealants - varying some by setting. In addition, silver diamine fluoride (SDF) is an exciting, new service LCHD has begun to offer that arrests tooth decay therefore avoiding or at least delaying the need for traditional treatment such as a filling.

Think oral health is 'just teeth' or unimportant? Poor maternal oral health can affect birth outcomes and result in premature, low birth weight babies. Early childhood tooth decay can affect a child's ability to grow and thrive as badly decayed teeth can cause pain which interferes with eating, sleeping, and more.

LCHD's Oral Health Program Manager has been aware of at least three cases in her dental public health career where children were losing weight - and countless others where costly rehabilitation under general anesthesia was required. Fortunately, the incidence and severity of decay has improved over the years - largely thanks to I-Smile™ and its partners.

CSA13 October 2022-September 2023 *this reflects the grant year*

Dental Screenings: 5,838

Fluoride Varnish: 5,619

Silver Diamine Fluoride: 10

Sealants: 4,175

High Risk: 1,140

Moderate Risk: 4,658

Low Risk: 5

Dental Care Coordination: 1,027



Iowa HHS



# LCHD PROGRAMS

## I-Smile™ Silver

Program Staff: Rachael Patterson-Rahn, Erin Andries, Angela Bauer, Rachel Heidbreder

LCHD's oral health team covers three counties for at-risk adults and older lowans through I-Smile™ Silver: Des Moines, Lee, and Van Buren. Only 10 Iowa counties receive I-Smile™ Silver services at this time through three contract agencies. LCHD has proudly been offering needed services for underserved adults for nearly a decade.

Due to the success of I-Smile™, I-Smile™ Silver was created as a look alike program to address the needs of the aging population and in time other at-risk adults. Contractors quickly learned, though a look alike program, the models can't look exactly alike since adults aren't readily found all in one place such as school. The I-Smile™ Silver program has evolved and two special projects, highlighted below, are currently much of the emphasis.

Again, basic, preventive services paired with referral and care coordination – similar to I-Smile™ – are provided to help individuals access needed dental care. In addition to SDF, we also have portable dental x-ray capability primarily to be used in I-Smile™ Silver. As mentioned, the public health settings differ from I-Smile™ with many possibilities including medical clinics, recovery residences, section 8 housing, etc.

*Oral Disease Preventionist Project* – LCHD dental hygienists collocate in medical clinics to offer and provide basic, preventive oral health services as part of a mutual client's medical appointment. Individuals with dental concerns or chronic health conditions are prioritized. The intent is to improve overall health and quality of life while reducing healthcare costs.

*Emergency Department Referral Project* – LCHD dental hygienists receive referrals from area emergency departments when individuals seek emergency care for dental needs. The referral may be accompanied by an intraoral photograph to allow for a teledentistry screening and most appropriate referral and care coordination. The intent is to improve overall health and quality of life while reducing repeat emergency visits (and associated costs) for the same dental problem due to challenges with accessing dental care.

Think oral health is 'just teeth' or unimportant? An A1C score can be improved by bettering your oral health. Individuals with gum disease are twice as likely to have a heart attack.

Studies have examined Medicare cost savings by chronic disease type for people who receive dental care compared to those who don't and it's compelling (chart).

Population	Diabetes	Heart Disease	Stroke
Not Receiving Dental Care	\$18,228	\$15,671	\$19,467
Receiving Dental Care	\$12,049	\$12,842	\$12,109
Cost Savings	\$6,179	\$2,829	\$7,358

# LCHD PROGRAMS

## Southeast Iowa Public Health Academic Training Program

Program Staff: Breanna Kramer, Christine Van Berkum

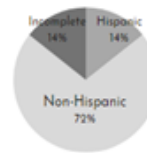
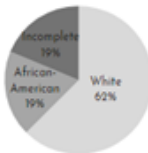
In August 2022, LCHD received a \$547,302 HRSA (Health Resources & Services Administration) grant from the the Department of Health and Human Services. This grant established the Rural Public Health Workforce Training Network in conjunction with Southeastern Community College (SCC) and Southeast Iowa Regional Medical Center (SEIRMC). The program focuses on cross-training opportunities for new and existing healthcare personnel and community organizations to learn the principles of community health work, community resources, and public health concepts.

In 2023, there were 16 professionals and students that completed the Community Health Worker course at SCC. The 8-week course is paid for through the HRSA grant. Students must complete course work by attending an in-person or online class plus complete 16 clinical hours. The clinical hours gives them real experience connecting people to community resources. Hours are completed through partnerships with SEIRMC, Carthage Memorial, and Goodwill. LCHD established the Mobile Connection Center (MCC) to assist with hours. The center is available by phone even when class is not in session, and is staffed by LCHD. The MMC locations were chosen based on where people are already going to alternate services in hopes to be convenient and accessible. These locations include public libraries, WIC clinics, Goodwill Career Centers, preschools, and Iowa Works offices.

### COMMUNITY HEALTH WORKER 8-WEEK CERTIFICATE COURSE

Build network of well-trained professionals with knowledge of community resources, CHW skills, and public health concepts through offering a non-credited 8-week paid CHW course at SCC.

Semester	Enrolled	Attended	Completed
January 2023	10	5	5
March 2023	7	3	3
August 2023	8	6	6
October 2023	3	2	2



### MOBILE CONNECTION CENTER

Serve underserved populations through Mobile Connection Centers to expand current public health functions and provide experiential learning to CHW students.

Mobile Connection Centers	People Served	Number of Resource Connections	Number of Referrals Made
18	55	120	8

### HEALTHCARE LUNCH & LEARN SERIES

Brief educational opportunities to improve operational capacity of health care system and meet broader human and social service needs of their patients

#### 2023 Lunch & Learn Attendees & CEU's

Month	Attendees	Month	Attendees	Month	Attendees	Month	Attendees	CEU Certificates
January	92	March	67	June	118	December	25	271
	Attendees		Attendees		Attendees		Attendees	Awarded

The HRSA grant also provided an opportunity for existing healthcare professionals to learn about public health services and community resources through the Healthcare Lunch & Learn Series. In 2023, there were 302 participants in the series.

# LCHD PROGRAMS

## Resilient Communities Demonstration Project/Empowering Families of Lee County

Program Staff: Breanna Kramer

Empowering Families' mission is to provide happy, healthy, safe childhoods in Lee County. We want to strengthen relationships and improve supports/services for our children and families.

Empowering Families underwent strategic planning in Fall of 2021 to create a coordinated, comprehensive action plan. The strategic plan incorporated input and feedback from community outreach efforts and Empowering Families planning sessions.

The following **3 Strategic Directions** were identified:

- • ➤ **Uniting Lee County**  
to inform, educate, and engage Lee County in Empowering Families, available resources, and child abuse prevention efforts
- • ➤ **Transforming Thoughts & Practices**  
to support our families through accessible, trauma-informed resources and family friendly workplace policies
- • ➤ **Empowering Families**  
to empower parents/caregivers to share their voice and experiences, and to improve accessibility to child care



### Highlights from 2023:

**Parent Engagement** - We wanted to encourage more parent-child interactions and bonding. We distributed 150 cake kits to for families to "celebrate the small wins" from potty training to winning a baseball game to enjoy a nice day outside. We distributed over 250 additional parent engagement bags that included a small activity for families to do together, info on local resources, and some parenting education. We held 6 Free Swim Days at the public pool. 39 parents completed our Summer Bucket List with over 482 family activities logged!! Awarded 8 nominated Child Champions to recognize local, everyday people going above and beyond for our kids!

**Child Care Steering Committee** - Worked on prioritizing key ideas to help stabilize and expand child care in Lee County. Applied for a \$75,000 Telligen grant to launch a shared services alliance and were in the top 10% of applicants, but ultimately were not funded. Received \$7,500 grant from the Lee County Charitable Fund to launch and pilot a substitute training program.

**Resilient Catalysts** - Worked with National Association on City and County Health Officials (NACCHO) to develop a Causal Loop Diagram and engage a diverse stakeholder group to work towards improving economic opportunities for our families in poverty. Began work on a data dashboard, policy brief, and logic model to improve family-friendly workplace policies.

**Trainings** - We funded 4 Lee County representatives to become trained as Parent Cafe facilitators. We hosted a "Sample" Parent Cafe for community partners to identify key host sites and partnerships with 11 participants. Fort Madison Community School Districts, Rape Victim Advocacy Program, and Head Start were identified as potential partners to launch in 2024. A Poverty Simulation was held at the Career Advantage Center for over 50 participants and the Fort Madison School District wanting to host another simulation for all of their staff! There were 3 local Connections Matter trainings for 217 participants who learned about Adverse Childhood Experiences and the impact of supportive environments. We partnered with Alcohol and Drug Dependency Services to host a Drug Free Workplace Policy workshop for local business with over 15 participants.

**Diaper Dash 5K:** Held on April 1st to launch Child Abuse Prevention Month and collect diapers/wipes for local parenting programs and food pantries. We had 69 runners with 3,580 diapers, wipes, shampoo, and more donated! This was more than \$1,100 donated in very, very cold weather conditions. We brought awareness to the fact that WIC, SNAP, and public benefits do not provide assistance for diapers with food pantries relying completely on donations for these HEAVILY needed items!

# LCHD PROGRAMS

## HOPES/MIECHV Home Visiting Program

Program Staff: Missy Park, Amy Cook, Laurie Mullins, Raegan Swainey, Susan Jeffries, Laura DeFord

In 2023, there were eight families that graduated after five years with the home visiting program. It was marked as a celebration on their commitment to the program and to being the best parent they can be. They showed commitment in teaching, guiding, and focusing on ways they could improve their children's lives. These families were with the program during COVID, when in-person visits were not possible, and they continued to see the benefits of virtual visits to gain parenting values.

When working with families referrals were made to several community resources like daycare assistance, food pantries, food stamp application, family counseling, energy assistance, Toys for Tots, DVIP services, SEIBUS for Iowa City appointments, Legal Aid, Helping Hands, Tri-State Pregnancy Center, and Early Head Start.

Staff attended numerous community outreach events including Day of the Child, Lee County Fair Kids Day, and the Early Childhood Summit. Along with promoting the program at community events, staff have been attending WIC clinics on a regular basis to recruit families to the program.

# Children Participating	93
# Families Participating	96
# of Home Visits	1801
# Parent Meetings Offered	51
# Children receiving a Developmental Screening	85%
# Children with Updated Immunizations	100%



Family Connections of Lee County continues to meet twice monthly in Fort Madison and Keokuk. The group is for expecting parents and parents/guardians of children under the age of 5. Participants can earn points by attending groups to "purchase" necessary items for their family such as diapers, wipes, car seats, etc. The groups focus on appropriate expectations of children, developing empathy, positive discipline, stress management, appropriate family roles, empowerment, connections to resources, along with fun family centered activities.

# LCHD PROGRAMS

## Child Care Nurse Consultant

Program Staff: Amy Hayes

With supportive funds from Children First and Iowa HHS, the CCNC works with childcare providers on various health and safety issues by visiting locations and providing technical assistance. Medication Administration, Period of Purple Crying, Playground Supervision, Sun Safety, and CPR/First Aid trainings give providers and staff the appropriate tools to care for children. The CCNC will assist providers on special health need care plans to assure children with allergies, health equipment, therapies, etc. have a plan and that all staff are aware of it. New in late 2023, the CCNC began to offer free CPR/First Aid trainings for CCR&R Region 5 through a grant from Iowa HHS. In December 2023, three trainings were held with 15 participants. This grant will continue through September 2024.

Number Childcare Providers participating with CCNC	33 (out of 35)
Number of Provider Visits	69
Number of Technical Assistance Calls	103
Number of Special Health Need Care Plans	17
Number of HCCI DHS Approved Trainings	27
Number of Training Participants	143
# of Handwashing Participants	270



Lee County preschool and daycare students learn from the CCNC about the importance of handwashing. A story is read to them about how to scrub the germs off. After the story they are given special “germs” to view under a special light. They then go wash the germs off, and then can inspect their hands again.



# LCHD PROGRAMS

## Clinics - Immunization, TB, Flu, COVID

Program Staff: Amy Hayes, Raegan Swainey, Becky Fader, Jackie Booth, Jamee Hudson

LCHD offers two immunization clinics a month - one in Keokuk and one in Fort Madison. As participants of the Vaccines for Children (VFC) program vaccines are available for the uninsured, underinsured, for those on Iowa Medicaid, or whose insurance doesn't cover vaccines. LCHD also held two Back-to-School Immunization Clinics in June and August 2023. In 2023, LCHD provided **234 child immunizations** and **21 adult immunizations**.

TB Clinics are held every Monday (exception of holidays) at LCHD from 3:00pm-4:00pm with a cost of \$20. In 2023, LCHD conducted **39 TB tests**.

In 2023, LCHD held five off-site flu clinics plus having them available during TB clinics. LCHD gave **243 flu vaccines**.

In September 2023, LCHD became a Bridge Access Program (BAP) provider from which changed the eligibility requirements on who was able to receive a COVID-19 vaccine us. BAP was for those who were age 19 and older, and who do not have health insurance or whose health insurance did not provide a zero-cost COVID-19 vaccine. Prior to September 2023, LCHD held 21 clinics and provided **171 COVID-19 vaccines**.

## Childhood Lead Poisoning Prevention Program (CLPPP)

Program Staff: Amy Hayes, Leslie Dettmers, Deedra Warner

Early detection of lead in the blood system is preventive measure for developmental delays in children. Risk factors for children include living in or being in a daycare home setting that was built before 1978, low-income family, or from an underdeveloped country (refugee, adoption, etc.). Lead testing is available at immunization and WIC clinics by using a Lead CARES II machine to give immediate results. While partnering with other LCHD programs like Child Adolescent Health, CCNC, and HOPES lead testing is promoted through coordinated outreach.

# of Lead Tests	106
Lead - Initial Inspections	3
Lead Follow-ups (in home)	3
Lead Follow-up Case Management	5
Dust Sampling tests for lead paint	2

# LCHD PROGRAMS

## Emergency Preparedness, Response, and Recovery

LCHD continued to be part of a 14-county regional health care coalition and participated in monthly regional planning and activities with other county public health agencies, hospitals, Emergency Medical Services (EMS) and Emergency Management Agencies (EMA). Activities LCHD participated in include:

Activity	Number	Purpose
Tabletop Drills	2	Testing of regional plans
Radio Communication & HAN (Health Alert Network) Drills	12	Test redundant communication methods
Regional Hazard Vulnerability Assessment	1	Identify top hazards to develop/improve and test plans in region for next year.
NIMS training & compliance planning	1	Provide NIMS compliance plan and training documents to region
EMresource updates	4	Quarterly local updates to states resource/contact online system

LCHD organizes and facilitates a local Health Care Coalition for the county which typically meets 2-4 times per year. Members include public health, EMS, EMA, long-term care facilities, home health and hospice agencies, local hospital and health care providers. The purpose is to share lessons learned from real or exercised events and improve local emergency preparedness plans. This year, the coalition discussed lessons learned from the pandemic, and a real event involving a long-term care facilities evacuation. An after-action report/improvement plan was created for these events. Sharing of plan updates, resources, and contacts resulted. Also during the year, the coalition completed a Lee County Hazard Vulnerability Assessment to identify the top ten hazards in Lee County. This is to help plan and organize for future tabletop or functional/full scale exercises. Our local coalition helps to facilitate health care systems working together and prepare for emergency events. This has resulted in great collaborative response and partnerships during the pandemic from preparedness, to response and now recovery modes.

LCHD maintains up-to-date emergency plans, call tree lists, and assures annual training is completed by the agency's workforce including all staff, volunteers, and contracted entities in Homecare and Hospice. Annual emergency preparedness training was completed in November.

# LCHD PROGRAMS

## LCHD Volunteers

LCHD volunteers are an essential piece of the agency. From July 2022 through June 2023, LCHD volunteers have 935.76 hours of their time to agency programs. The 2023 national value for volunteer time is \$31.80/hour. That means the volunteers hard work and dedication to LCHD saved the agency \$29,757.17.

LCHD volunteers assist with hospice by visiting with clients and helping families. They volunteer at outreach events like the ABATE District 18 Annual Mystery Ride for Hospice and Senior Day at the Fair. They work in the office assembling admission packets, organizing the bereavement newsletter mailing, and making the annual Tree of Love a success.

The volunteers played an integral role in the COVID-19 vaccine clinics by working the registration desk, and reviewing and filing paperwork. For the oral health team, volunteers will prepare consent packets and goody bags for each child. There is even a team that works on imaging charts for hospice, homecare, and community health programs.

Anyone can be a LCHD volunteer! If interested in becoming a volunteer just call the office at (319)372-5225.

2023 Volunteer Percentages by Program

